

## Tech-Med<sup>®</sup> Eye Products

### Tech-Med<sup>®</sup> Illuminated Eye Test Cabinet

#### Features & Benefits

- Metal cabinet with baked enamel finish
- Features carry handle for portability and 7 foot power cord
- Can be wall mounted
- 110-120V AC
- UL Listed (Canada/USA)
- Includes 20' Snellen eye chart, 20' Illiterate eye chart, and 10' Illiterate eye chart

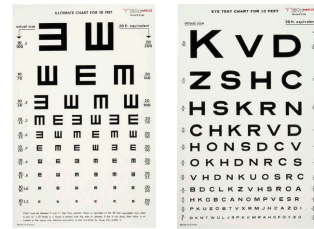


Item#	Description	Packaging
3060	Ivory, 14" x 9" x 4"	1/ea

### Tech-Med<sup>®</sup> Illuminated Eye Charts

#### Features & Benefits

- White translucent plastic chart with non-glare black letters
- 20 foot charts can be used with the 3060 Illuminated Eye Test Cabinet
- Kindergarten eye chart features shapes like boats, hearts, stars, and circles
- Tumbling E's chart features E's in different directions
- Snellen chart features letters of the alphabet
- 14" x 9"

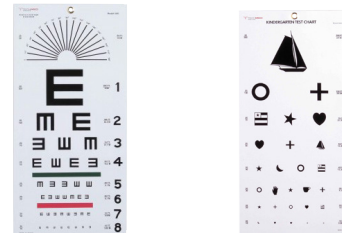


Item#	Description	Packaging
3062	Snellen, 10 ft	1/ea
3065	Tumbling-E, 10 ft	1/ea
3061	Snellen, 20 ft	1/ea
3064	Tumbling-E, 20 ft	1/ea
3063	Kindergarten, 20 ft	1/ea

### Tech-Med<sup>®</sup> Plastic Eye Charts

#### Features & Benefits

- 20 ft. test distance with non-reflective matte finish
- Kindergarten eye chart features shapes like boats, hearts, stars, and circles
- Tumbling E's chart features E's in different directions
- Snellen chart features letters of the alphabet



Item#	Description	Packaging
TM3050	Snellen	1/ea
3051	Tumbling E	1/ea
3052	Kindergarten	1/ea

## Tech-Med® Pocket Eye Test Chart

### Features & Benefits

- Use at 14"
- Provides 20/800 distance
- Durable, laminated plastic
- Metric & English Scale on back



Item#	Description	Packaging
3053	6-1/2" x 3-1/2"	1/ea

## Tech-Med® Jaeger Eye Chart

### Features & Benefits

- Use at 14"
- Provides 20/800 distance
- Durable, laminated plastic
- Metric & English Scale on back



Item#	Description	Packaging
3054	4-3/4" x 7"	1/ea

## Tech-Med® Eye Occluder

### Features & Benefits

- Shaped to cover either eye during an eye examination
- Constructed of black plastic



Item#	Description	Packaging
3066	9 3/4"	1/ea

## Tech-Med® Eye Patches

### Features & Benefits

- Elastic head band (not made with natural rubber latex)
- Black sateen finish

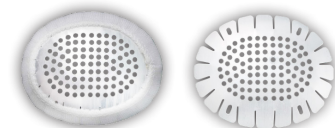


Item#	Description	Packaging
4473	Flat	12/bg
4475	Convex	12/bg

## Tech-Med® Fox Aluminum Eye Shield

### Features & Benefits

- Malleable & lightweight
- Perforated convex eye shield with slots
- Available with white cover



Item#	Description	Packaging
4476	Without Cover	12/bx
4476-1	With Cover	50/bx
4476W	Cover for Eye Shield, White	50/bx

### Connect with us!

Find our full line of products online at:

[www.dukal.com](http://www.dukal.com)

Telephone: 1-631-656-3800

Toll Free: 1-800-243-0741

Fax: 1-631-656-3810

Email: [customerservice@dukal.com](mailto:customerservice@dukal.com)

To Place Orders: [orders@dukal.com](mailto:orders@dukal.com)

### Corporate Office

DUKAL Corporation

2 Fleetwood Court,

Ronkonkoma, NY 11779



Control # SL070833